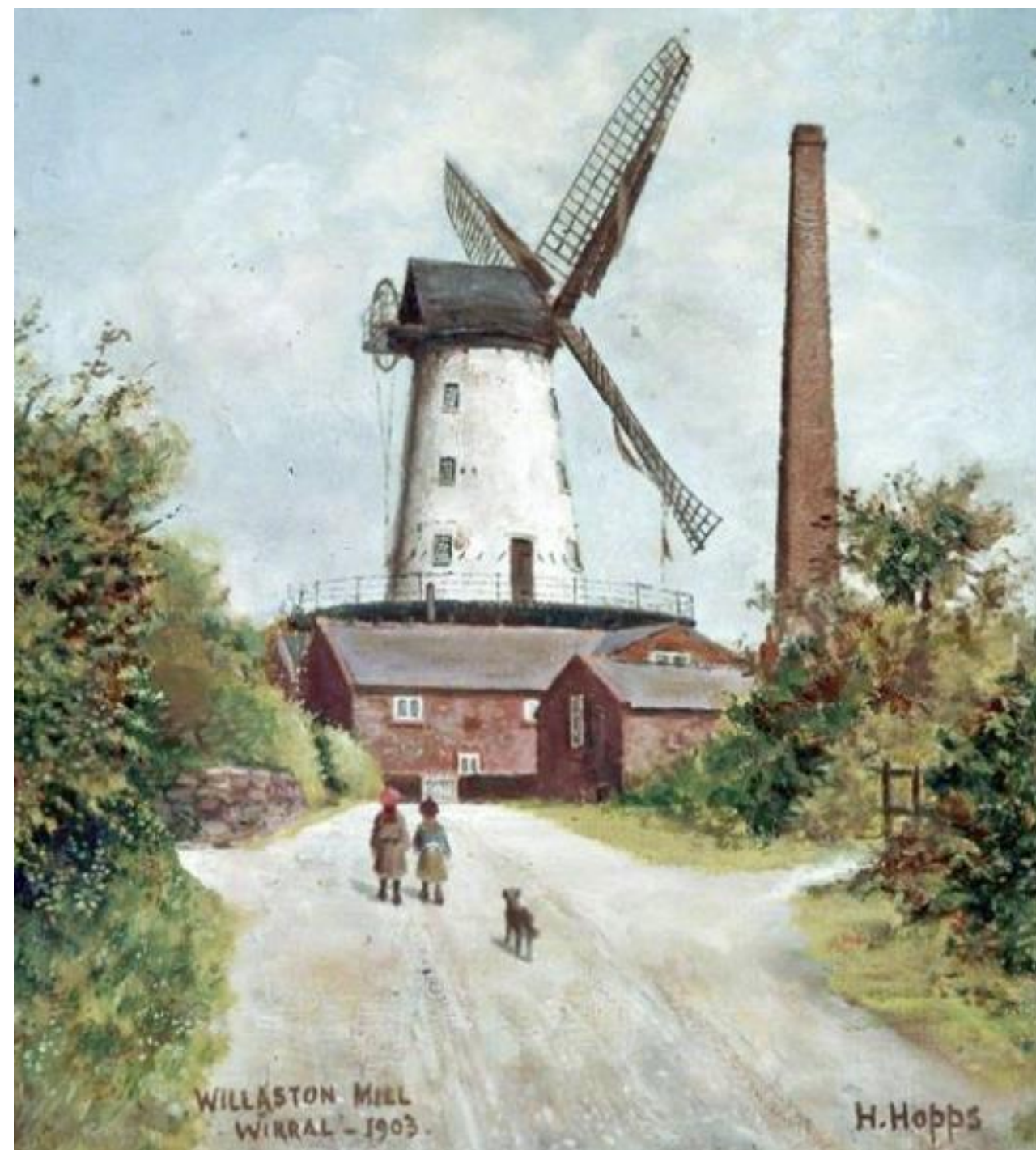




WILLASTON

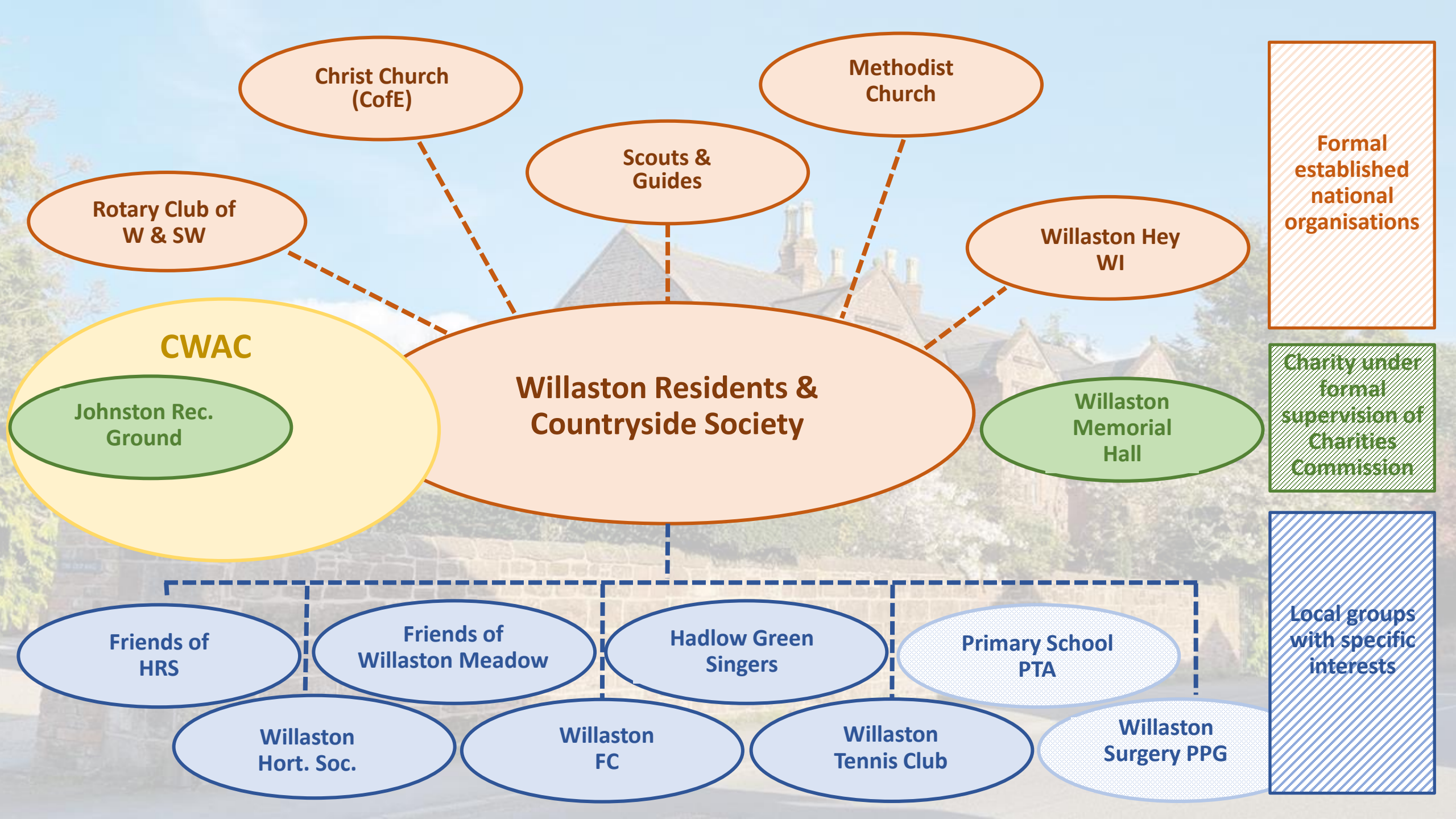
Residents' & Countryside Society

WILLASTON IN THE *FUTURE*



An aerial night photograph of a village square. In the center, a large, dense tree of multi-colored Christmas lights stands in a grassy area. Surrounding the square are various houses, some with their windows lit. In the foreground, a curved road leads to a two-story stone building with a sign that reads "THE NAG'S HEAD". The building is brightly lit from within, and its windows are visible. The overall scene is festive and illuminated by a mix of warm yellow lights from the buildings and the cool blue and multi-colored lights of the Christmas tree.

THE CURRENT SITUATION



CURRENT CONSTITUTION & ORGANISATION OF WR&CS

WR&CS Committee – reps from:

- Friends of Hadlow Road Station
- Friends of Willaston Meadow
- Hadlow Green Singers
- Horticultural Society
- Johnston Recreation Ground Advisory Committee
- Rotary Club of Willaston and South Wirral
- 1st Willaston Scouts
- Willaston Football Club
- Willaston Church of England
- Willastonhey WI
- Willaston Memorial Hall
- Willaston Methodist Church
- Willaston Tennis Club
- Willaston Toddler Group
- Willaston CE Primary School
- Willaston Surgery Patient Participation Group
- Willaston Village Festival Society

Plus Officers, Residents' Reps. & elected Councillor

The aims of the Society are to:

- Protect and improve the environmental amenities of the village and its surroundings;
- Preserve and encourage village cultural and social activities;
- Represent the views of the village and monitor matters of common interest.

Structure:

- Unincorporated Society.
- No formal involvement of local businesses.
- Data in various locations / private computers
- Large Committee (28 members).
- 8 Officers for day-to-day decisions.
- Limited financial means – Village lottery only source of funds apart from ad-hoc grants.

Above substantially unaltered since inauguration of WR&CS in 1975

PROBLEMS WITH CURRENT CONSTITUTION & ORGANISATION

- ❖ Unincorporated Society means Members / Officers may have personal liability.
- ❖ Unable to sign agreement for Christmas lights (who owns them?)
- ❖ Large Committee (28 members) – too big? – meetings too formal?
- ❖ Difficult to attract volunteers for positions.
- ❖ *Disseminating* information from CWAC etc. should also be a role (e.g. regular Newsletter)
- ❖ Should local businesses also have representation? They pay (business) rates as well!!
- ❖ More income generation required (for communication and small scale projects?)

NEEDS FOR THE FUTURE?

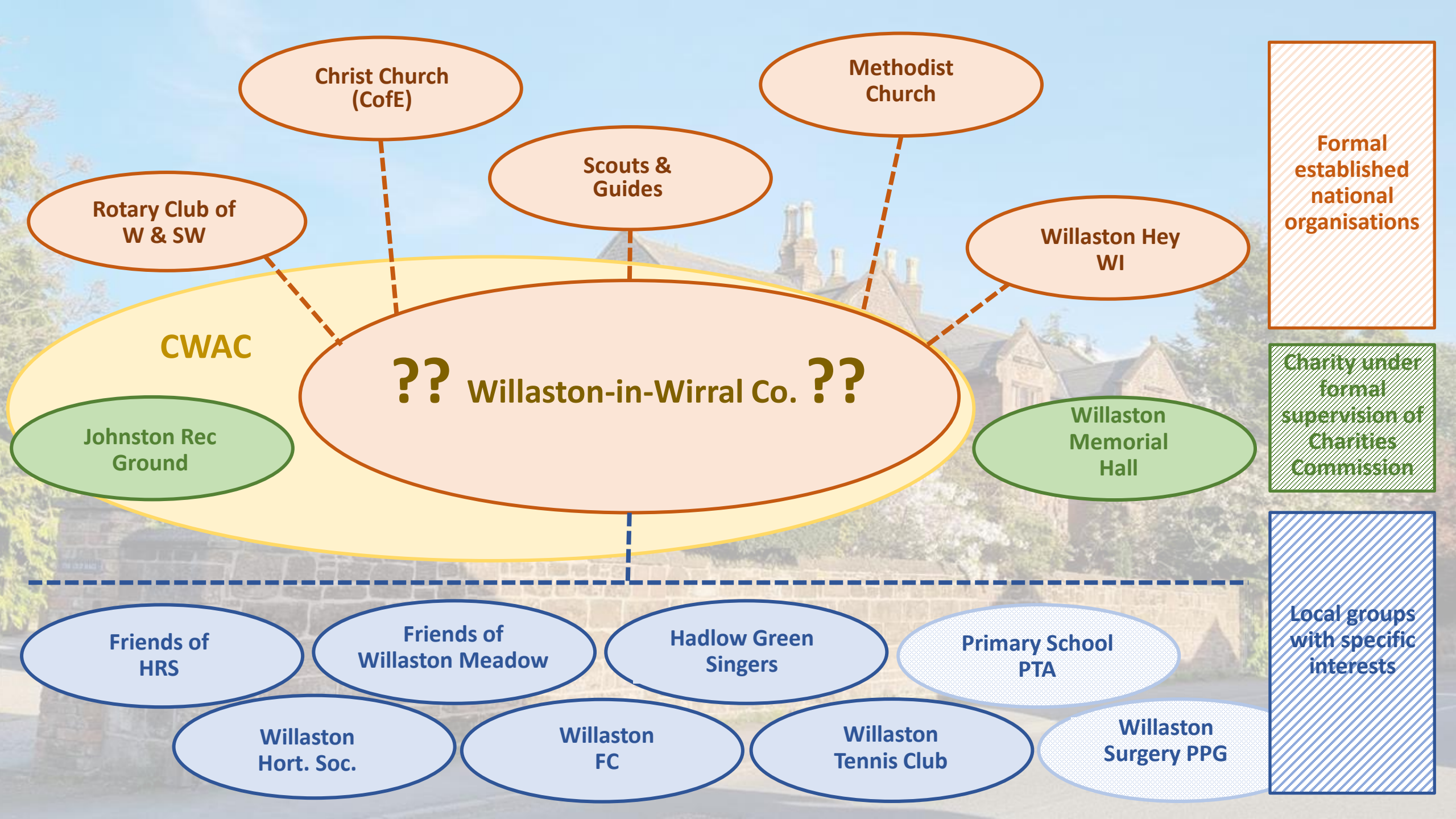
- ❖ Change focus from 'Residents' to 'Community'
- ❖ Recognition by CWAC as the pan-village representative body.
 - ❖ Neighbourhood Planning / Environmental issues
 - ❖ Community 'hubs' well served by WMH, Rec., Churches, HRS, Pubs.
- ❖ Distributing information from CWAC (online and print methods)
- ❖ Ability to own assets and trade with limited liability for Officers & members.
- ❖ 'Platform' enabling all village organisations to collaborate and cooperate.
- ❖ **People – to get involved**

OPTIONS AVAILABLE

		Advantages	Disadvantages
Do nothing		Unless new volunteers come forward for existing roles, WR&CS will be wound up at the SGM in September 2024. Ring fenced funds for Christmas Lights and Play Area will be secured until they run out.	
Form a Parish/Community Council		Formal layer of local govt recognised by CWAC with funding and support. Legal authority over some aspects of village life	a) Complex process of formation b) Modest increase in Council Tax c) Volunteers to be Councillors?
Independent Private Companies			
	- Unincorporated Charitable Assoc. (<i>Mem. Hall</i>)	Clear charitable objectives	Complex rules by Charities Commission
	- Incorporated Charitable Organisation	“ “ “	“ “ “ “ “ & FCA
	- Trust (<i>Johnson Recreation Ground</i>)	“ “ “	Difficulty attracting trustees – personal liab.
	- Company Limited by Guarantee	Good for Community groups and membership organisations as ours.	a) No shareholders ∴ No investment b) Volunteers to be Directors/Officers?
	- Limited Company	Easy ability to borrow, trade etc.	Perception of profit before community
	- Unincorporated Association	Straightforward – no formal setting up	No ability to sign contracts
	- Community Interest Company (CIC)	Easy ability to borrow, trade etc.	Profits payable to shareholders – as above.
	- Registered Society – Co-operative		Only co-operative between members
- Registered Society - Community Benefit Soc. (CBS)	All activity must be for benefit of community	Attracting ‘investment’ where no financial gain.	

OPTIONS AVAILABLE

		Advantages	Disadvantages
Do nothing		Unless new volunteers come forward for existing roles, WR&CS will be wound up at SGM in September 2024. Ring fenced funds for Christmas Lights and Play Area will be secured until they run out.	
Form a Parish/Community Council		Formal layer of local govt recognised by CWAC with funding and support. Legal authority over some aspects of village life	a) Complex process of formation b) Increase in Council Tax c) Volunteers to be Councillors?
Independent Private Companies	- Unincorporated Charitable Assoc. (<i>Mem. Hall</i>)	Clear charitable objectives	Complex rules by Charities Commission
	- Incorporated Charitable Organisation	“ “ “	“ “ “ “ “ & FCA
	- Trust (<i>Johnson Recreation Ground</i>)	“ “ “	Difficulty attracting trustees – personal liab.
	- Company Limited by Guarantee	Good for Community groups and membership organisations as ours.	a) No shareholders ∴ No investment b) Volunteers to be Directors/Officers?
	- Limited Company	Easy ability to borrow, trade etc.	Perception of profit before community
	- Unincorporated Association	Straightforward – no formal setting up	No ability to sign contracts
	- Community Interest Company (CIC)	Easy ability to borrow, trade etc.	Profits payable to shareholders – as above.
	- Registered Society – Co-operative		Only co-operative between members
- Registered Society - Community Benefit Soc. (CBS)	All activity must be for benefit of community	Difficulty in attracting ‘investment’ where no financial gain.	



Christ Church (CofE)

Methodist Church

Scouts & Guides

Rotary Club of W & SW

Willaston Hey WI

CWAC

?? Willaston-in-Wirral Co. ??

Johnston Rec Ground

Willaston Memorial Hall

Friends of HRS

Friends of Willaston Meadow

Hadlow Green Singers

Primary School PTA

Willaston Hort. Soc.

Willaston FC

Willaston Tennis Club

Willaston Surgery PPG

Formal established national organisations

Charity under formal supervision of Charities Commission

Local groups with specific interests

POTENTIAL WAY FORWARD?

(CHARITABLE) COMMUNITY BENEFIT SOCIETY (CBS)

- ❖ Community Benefit Society is a formal incorporated Society which has a legal commitment to the wider community rather than just its members.
- ❖ Can raise funds by withdrawable shares.
- ❖ Profits must be ploughed back into the organisation – no dividends to be paid to members who buy shares.
- ❖ May have 'Asset Lock' (compulsory for "Charitable" CBS) meaning that any assets owned on dissolution must be transferred to an equivalent charitable type organisation.
- ❖ Charitable CBS would have charitable status with HMRC. Strict criteria but allows possibility of merging with other charities regulated by the Charities Commission.
- ❖ May also allow ownership and operation of businesses which are deemed unviable as profit making ventures but are central to the community.
- ❖ Democratic – each member = 1 vote (irrespective of no. of shares purchased)

COMPANY LIMITED BY GUARANTEE (CLG)

- ❖ Private Limited Liability Company with no 'investment' by shareholders. Members only required to 'guarantee' liabilities up to a set limit (which could be as low as £1).
- ❖ Therefore, CANNOT raise funds by share issues.
- ❖ Profits must be ploughed back into the organisation – no dividends to be paid to members who buy shares.
- ❖ May also allow ownership and operation of businesses which are deemed unviable as profit making ventures but are central to the community.
- ❖ Democratic – each member = 1 vote (irrespective of no. of shares purchased)

POTENTIAL WAY FORWARD?

PARISH COUNCIL

- ❖ **A Parish Council is a formal layer of local government, funded from a 'precept' on the Council Tax of all households in the area.**

WHAT DO THEY DO?

Unlike other types of local authorities, local councils are not tasked with statutory responsibilities relating to the provision of housing or social care, education or waste collection. Local councils are in the fortunate position of having statutory powers which they have discretion to exercise.

Many local councils choose to get involved in a broad range of projects and activities, the purpose of which is to make the local area a better place to live. Although local councils are not formally obliged to provide many public services, Government is encouraging local councils to deliver more services and play a greater part in supporting their communities.

For example, a local council has statutory powers in relation to:

- | | |
|-----------------------------|--------------------------|
| Sports facilities | Allotments |
| Local youth projects | Bus shelters |
| Litter bins | Off street carparks |
| Community centres | Parks and open spaces |
| Community transport schemes | Neighbourhood Planning |
| Crime reduction measures | Street lighting |
| Festivals and fetes | Traffic calming measures |
| Tourism activities | |

POTENTIAL WAY FORWARD?

PARISH COUNCIL

- ❖ A Parish Council is a formal layer of local government, funded from a 'precept' on the Council Tax of all households in the area.





WILLASTON

Residents' & Countryside Society

NEXT STEPS?



WILLASTON MILL
WIRRAL - 1903.

H. Hopps