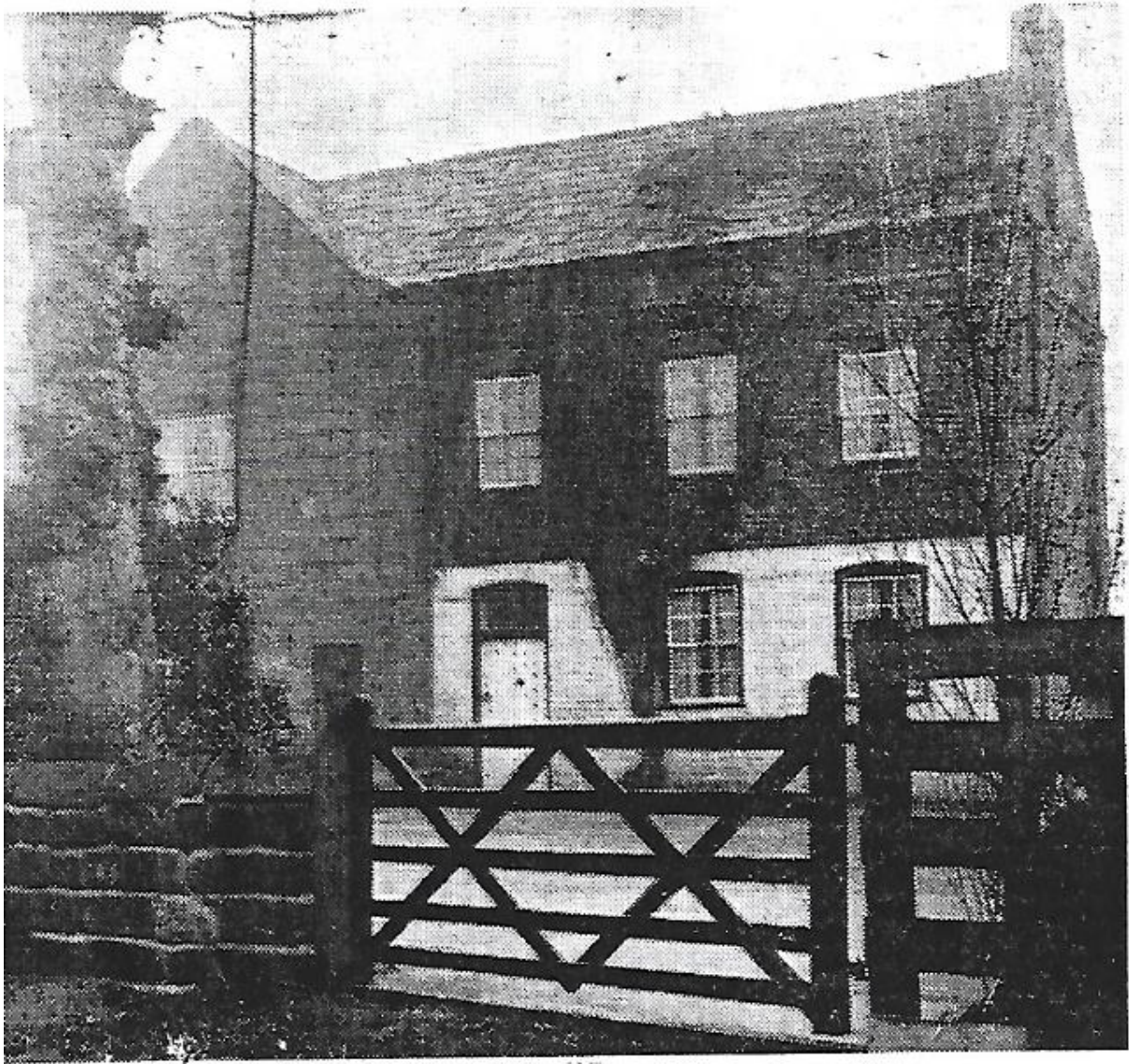


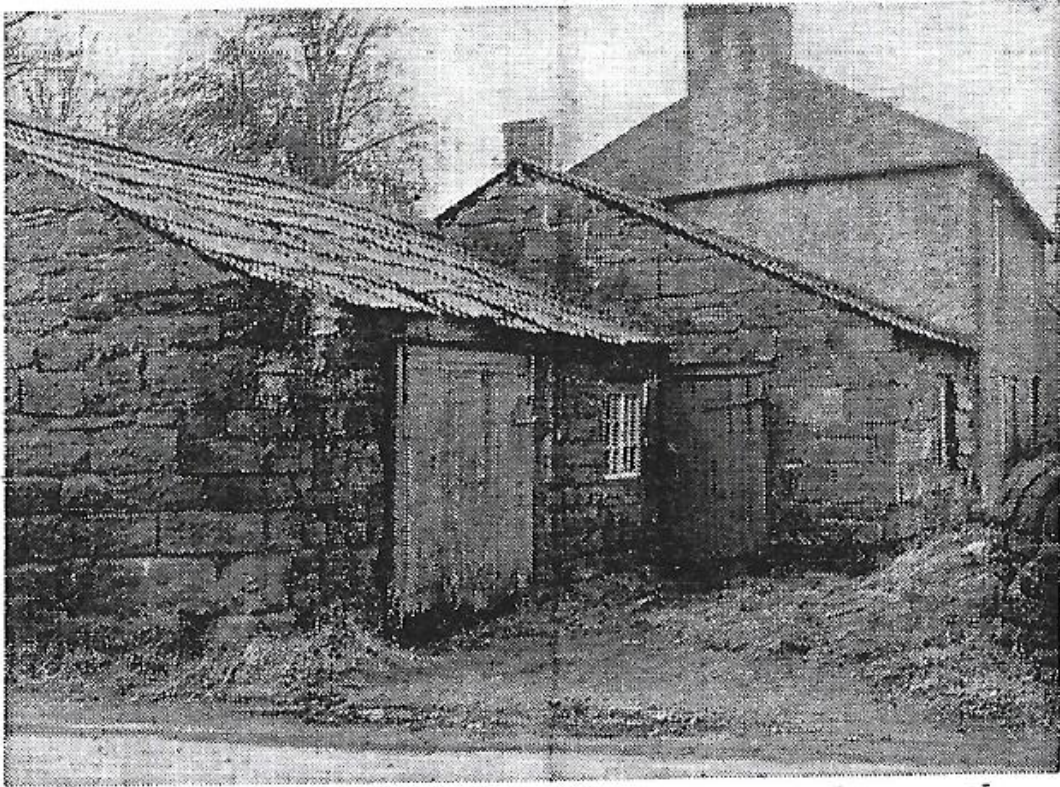
Corner House Farm and Willaston Smithy

Information believed to be from The News, Friday 17th December 1971



Cheshire County Council has authorised a grant towards the repair of Corner House Farm, Willaston (pictured here). Situated off the south-west corner of the village green, it is a sandstone manor house dating from 1637 with an 18th century brick wing. The County Planning Department's report states that much of the interior has been well restored revealing a massive inglenook. It contains many interesting and unusual features, including an extensively decorated stone mantel.

WILLASTON SMITHY



Willaston smithy and the adjoining cottage, seen here, are now virtually derelict and are likely to come down to make way for redevelopment. The smithy has not been used for about four years since the last blacksmith, the late Mr Stanley Ashton gave up but the cottage, which had been occupied by the Millington family for nearly 200 years, only ceased to be used six months ago when the Misses Laura and Henrietta Millington, 89-years-old twin sisters, who had lived their all their lives, left Willaston.



THE SMITHY



THE SMITHY BEING DEMOLISHED

These photos of the Smithy and it being demolished are by Dennis Williams.