

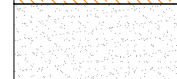
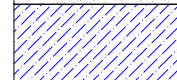
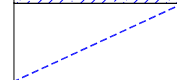
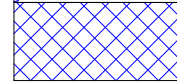
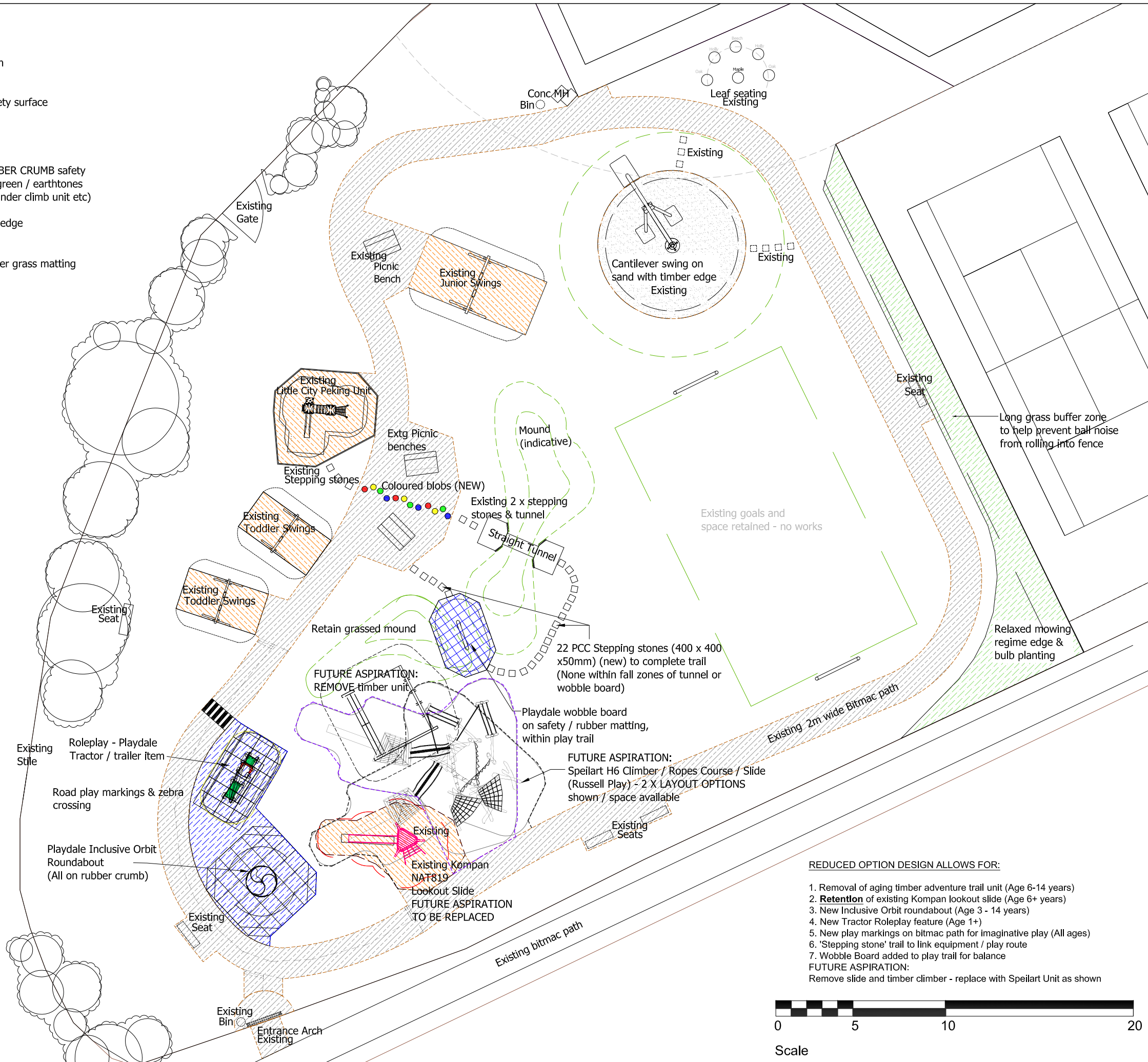


-  Existing bitmac path
-  Existing rubber safety surface
-  Existing sand area
-  Proposed new RUBBER CRUMB safety surface (to match green / earthtones adjacent material under climb unit etc)
-  Proposed new PCC edge
-  Proposed new rubber grass matting safety surface area



Roleplay - Tractor (tunnel) & Trailer (tunnel & sit on top) - PLAYDALE



Inclusive Orbit (Roundabout) PLAYDALE



PLAYDALE Wobble Board within play trail



Artists Impression of H6 Unit



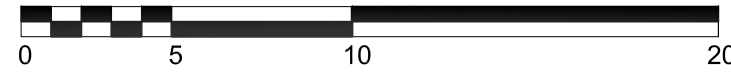
FUTURE ASPIRATION H6 Speilart Russell Play Combined Climber / Slide / Monkey bar Ropes course. (Various options within kit - shown above without roof, below with roof)

**CWac 2017-18 SMALL PLAY SITES JOHNSTON REC PLAY AREA (PH2) Play Area Improvements General Arrangement Plan**

Drawing Number: 117\_08 <sup>Rev</sup> FUTURE  
 Drawn by: MPH Scale: NTS  
 Date: Aug 2017 See scale bar



- REDUCED OPTION DESIGN ALLOWS FOR:**
1. Removal of aging timber adventure trail unit (Age 6-14 years)
  2. **Retention** of existing Kompan lookout slide (Age 6+ years)
  3. New Inclusive Orbit roundabout (Age 3 - 14 years)
  4. New Tractor Roleplay feature (Age 1+)
  5. New play markings on bitmac path for imaginative play (All ages)
  6. 'Stepping stone' trail to link equipment / play route
  7. Wobble Board added to play trail for balance
- FUTURE ASPIRATION:**  
 Remove slide and timber climber - replace with Speilart Unit as shown



Scale